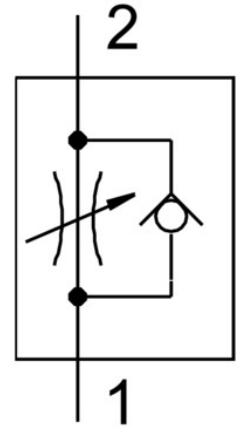
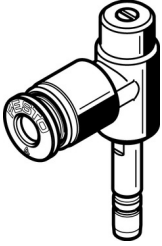


# One-way flow control valve VFOC-S-S4-Q4

Part number: 559723

FESTO



## Data sheet

Feature	Value
Type code	VFOC
Valve function	Supply air flow control non-return function
Pneumatic connection 1	QS-4
Pneumatic connection 2	Push-in sleeve QS-4
Actuation type	Manual
Adjusting element	Slotted screw
Type of mounting	Plug-in With push-in sleeve
Standard nominal flow rate in flow control direction	0 l/min ... 100 l/min
Standard nominal flow rate in non-return direction	60 l/min ... 100 l/min
Operating pressure	0.2 bar ... 10 bar
Ambient temperature	-10 °C ... 60 °C
Mounting position	Any
Symbol	00991453
Standard flow rate in flow control direction 6 -> 0 bar	0 l/min ... 170 l/min
Standard flow rate in non-return direction at 6 -> 0 bar	130 l/min ... 160 l/min
Operating medium	Compressed air as per ISO 8573-1:2010 [7:4:4]
Information on operating and pilot media	Operation with oil lubrication possible (required for further use)
Storage temperature	-10 °C ... 40 °C
Temperature of medium	-10 °C ... 60 °C
Product weight	9.2 g
Note on the pneumatic connection 2	Only suitable for Festo QS connections
Note on materials	RoHS-compliant
Seals material	NBR
Hollow bolt material	Wrought aluminum alloy Anodized Black
Releasing ring material	POM
Material of adjusting screw	High-alloy stainless steel

Feature	Value
Swivel joint material	Die-cast zinc